



PC CARD WRITER / READER

Installation & Manual

Please Note: Only use 3,3V SRAM CARDS with this hardware!

System requirements :

PC with Universal Serial Bus USB 1.1 or USB 2.0

compatible with operating systems:

- **Windows 98**
- **Windows 98 SE**
- **Windows ME**
- **Windows 2000**
- **Windows XP**

Installation:

Windows 98, 98 SE, ME

-Attention: install card-reader hardware first!

1. connect PC Card Reader with a PC USB socket
2. After the "Hardware Assistant" window opens, insert the Installation-CD in CD-ROM drive
3. set "Search CD-ROM" drive as source for driver in the "Hardware Assistant" menu
4. install USB driver. After this has completed the PC-Card program installation will start automatically
5. run installation (see Windows XP / Windows 2000)
6. start PC-Card software
7. check USB driver : if the USB-drive has been successfully installed and connected in the PC-Card "Drive" label (bottom right window corner) you should see "NEWLIFT"
8. insert 3.3V SRAM Card in PC-Cardreader

If installation was unsuccessful:

1. remove hardware, disconnect the USB cable
2. run windows control panel, run software -> uninstall-software
3. uninstall PC-Card software
4. run installation again correctly

**In case the automatic uninstallation of PC-Card failed,
you can manually removes these files:**

driver info file folder:

c:\windows\inf\other\NewLift GmbHFSTCard.inf

driver sys file folder:

c:\windows\system32\drivers\mitsuusb.sys

Windows 2000

Windows XP

-Attention: first Software installation! last hardware connect!

1. insert Installation-CD in CD-ROM drive
2. the PC-Card installation program should start automatically
3. choose destination folder
4. run Installation
6. connect PC Card Reader to a PC USB socket
7. Windows will detect the USB device and start the new "Hardware Assistant"
8. run driver installation, new "Hardware Assistant" (next)
9. run PC Card software
10. check USB driver : if the USB-drive has been successfully installed and connected in the PC-Card "Drive" label (bottom right window corner) you should see "NEWLIFT"
11. insert 3.3V SRAM Card in PC-Cardreader

If installation was unsuccessful:

1. remove hardware, disconnect the USB cable
2. run windows control panel,run software -> uninstall-software
3. uninstall PC-Card software
4. run installation again correctly

In case the automatic uninstallation of PC-Card failed, you can manually removes these files:

driver info file folder:

c:\windows\inf\FSTCard.inf

driver sys file folder:

c:\windows\system32\drivers\mitsuusb.sys

Softwareversion v1.4

supported drives:

- NEWLIFT PC CARD WRITER / READER USB
- OmniDrive USB Professional
- OmniDrive Professional (PC-Printerport)

delivered items :

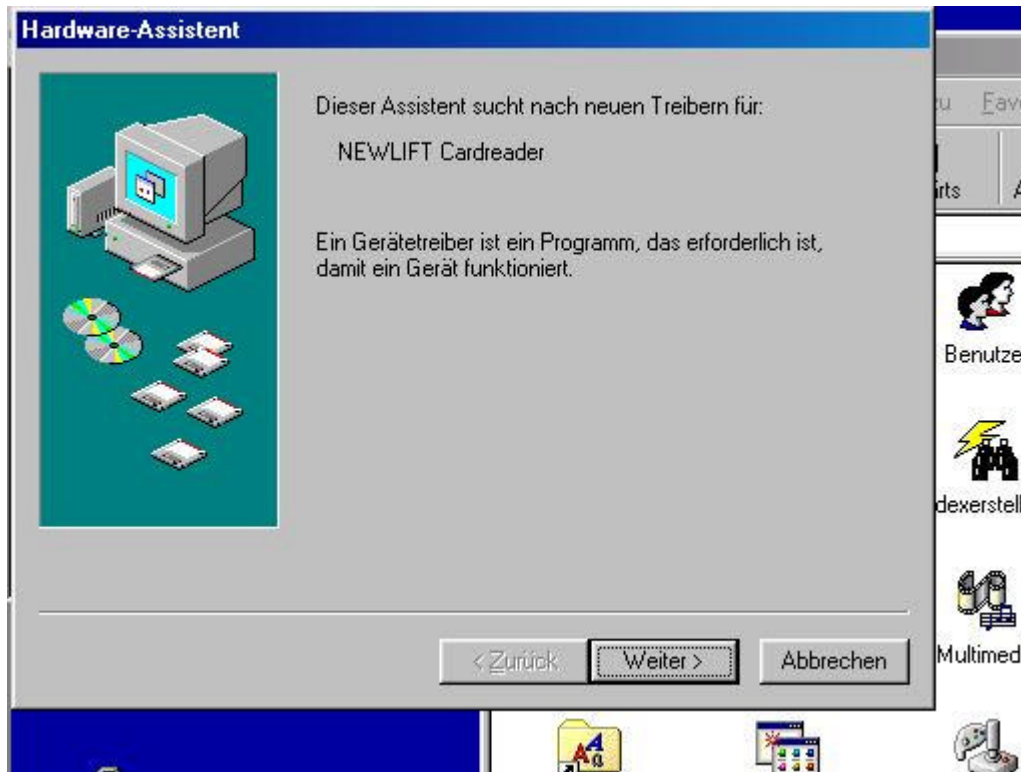
- 1 NEWLIFT PC CARD WRITER / READER USB
- 1 Installation - CD with driver & PC Card software
- 1 USB - cable
- 1 Installation & Manual

Installation:

Windows 98, 98 SE, ME

-Attention: install card-reader hardware first!

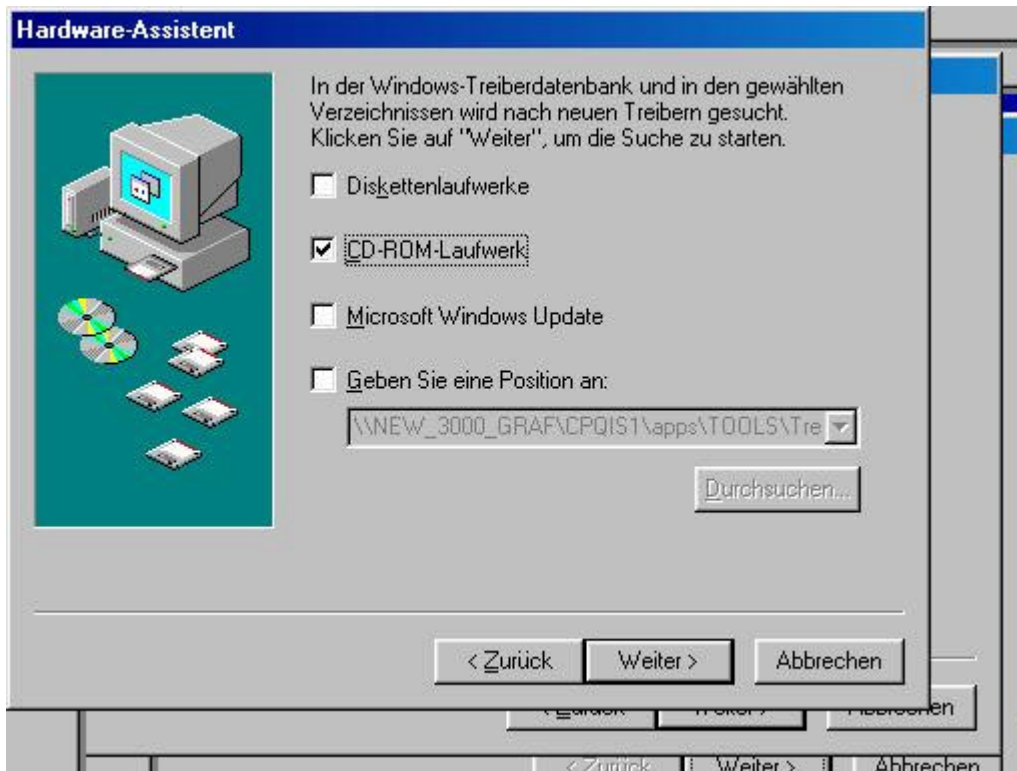
1. connect PC Card Reader with a PC USB socket



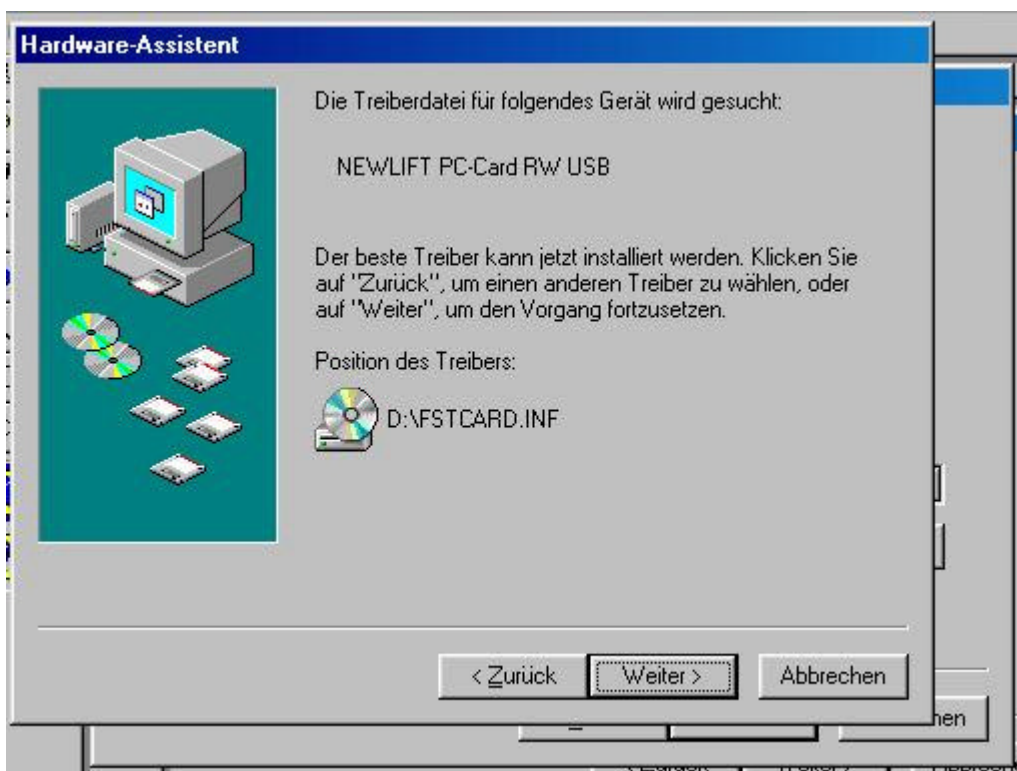
2. After the "Hardware Assistant" window opens, insert the Installation-CD in CD-ROM drive



2. set "Search CD-ROM" drive as source for driver in the "Hardware Assistant" menu



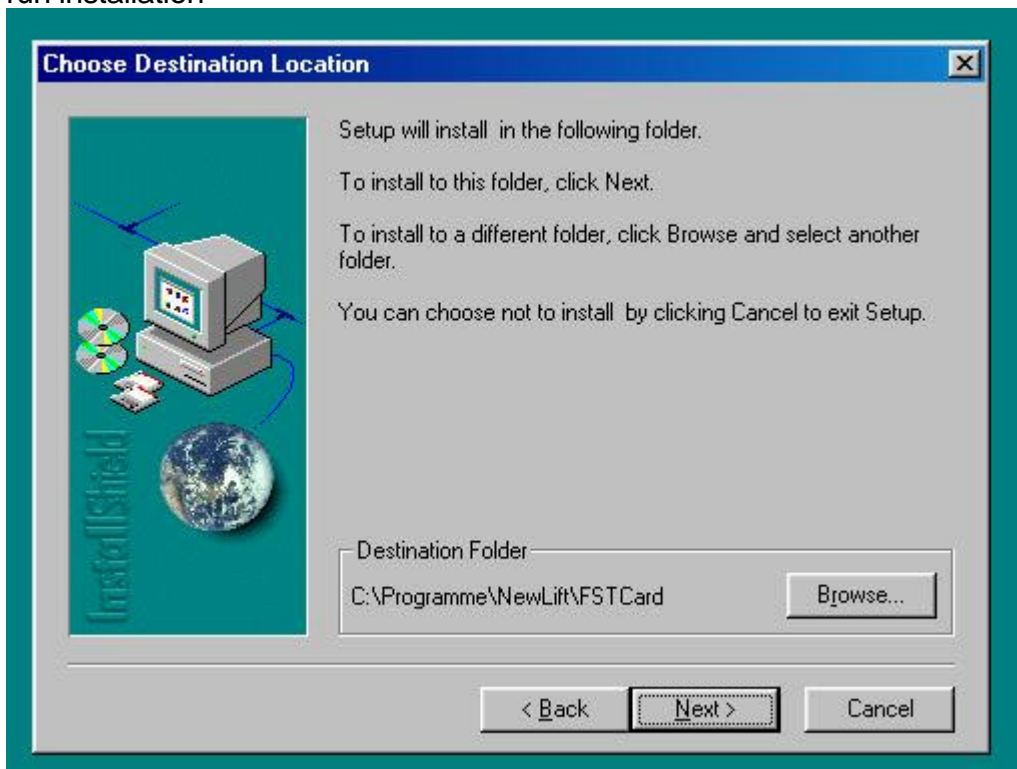
4. install USB driver. After this has completed the PC-Card program installation will start automatically



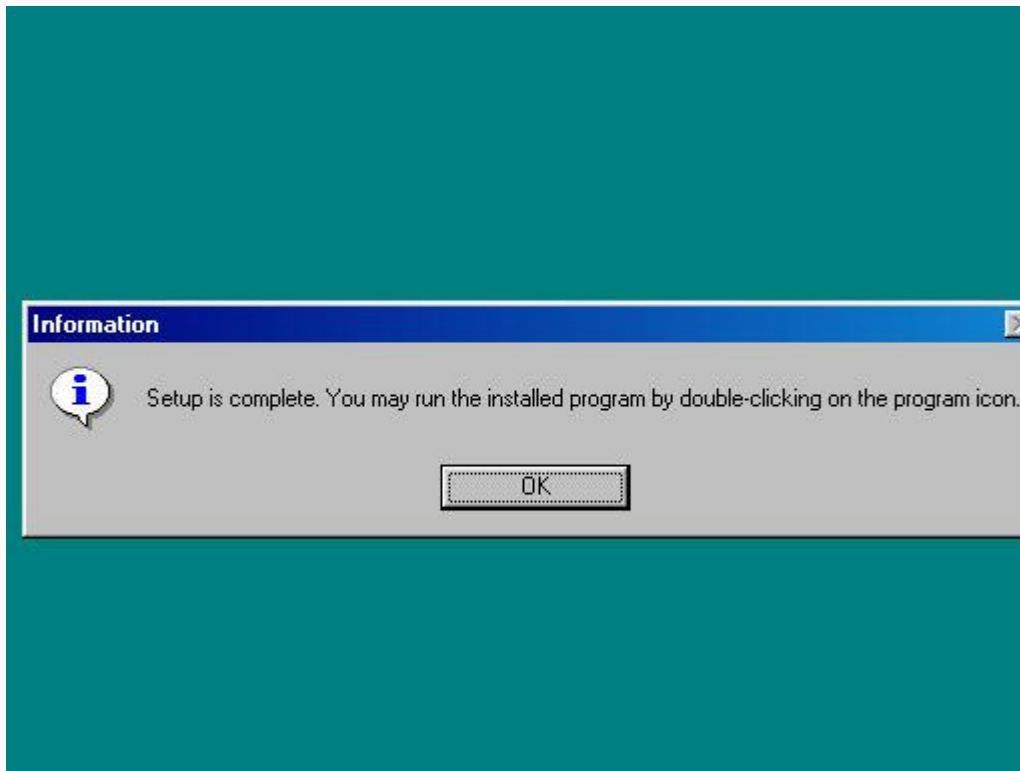
5. run installation (see Windows XP / Windows 2000)



run installation

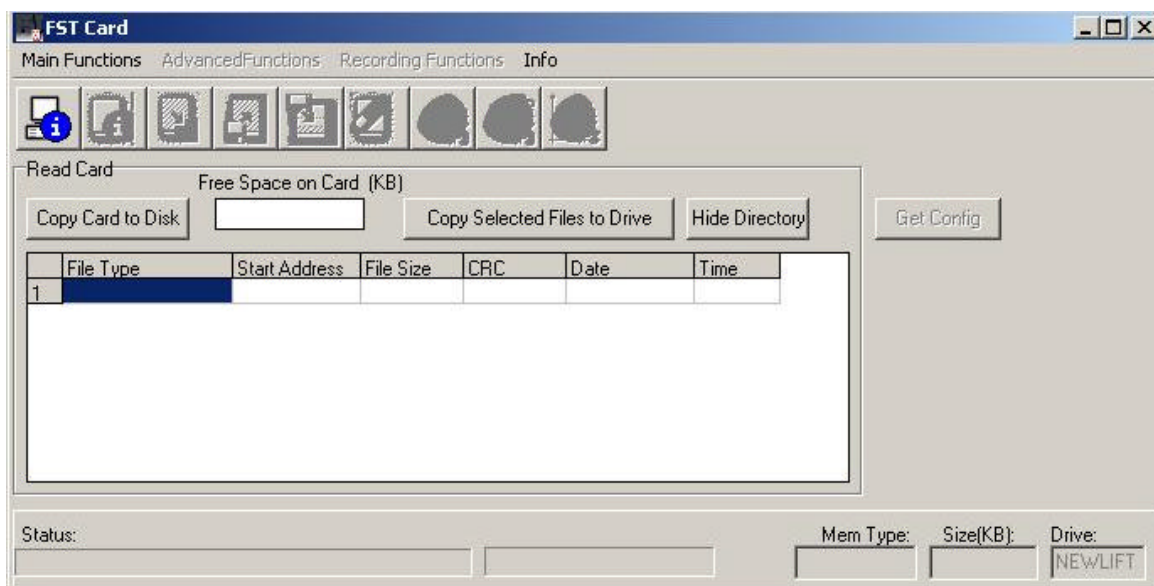


run installation

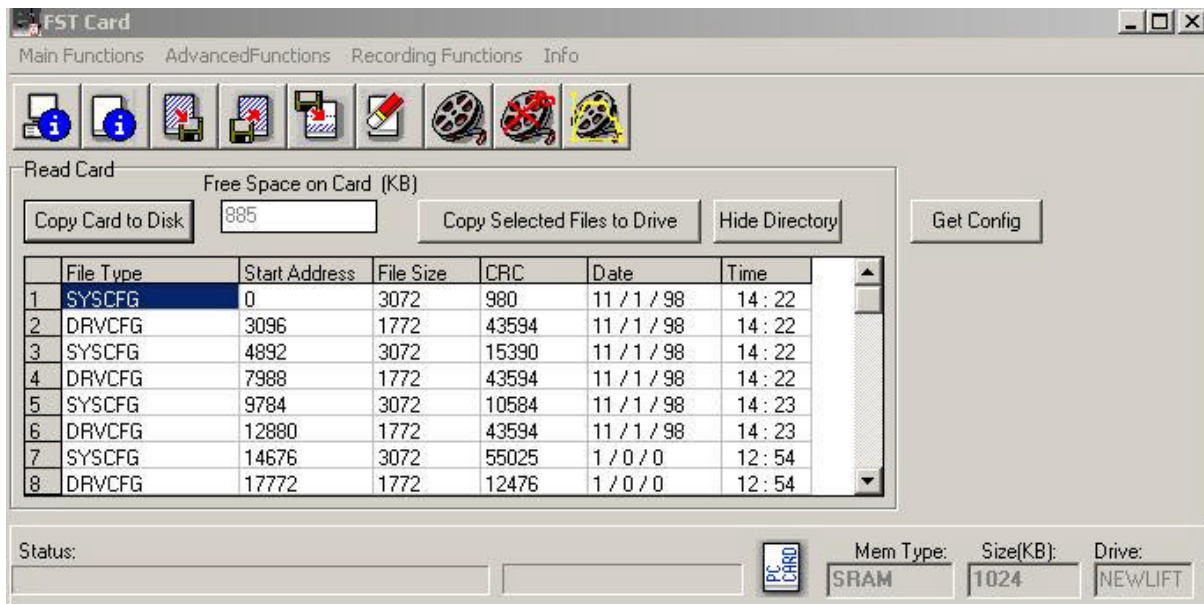


6. start PC-Card software

7. check USB driver : if the USB-drive has been successfully installed and connected

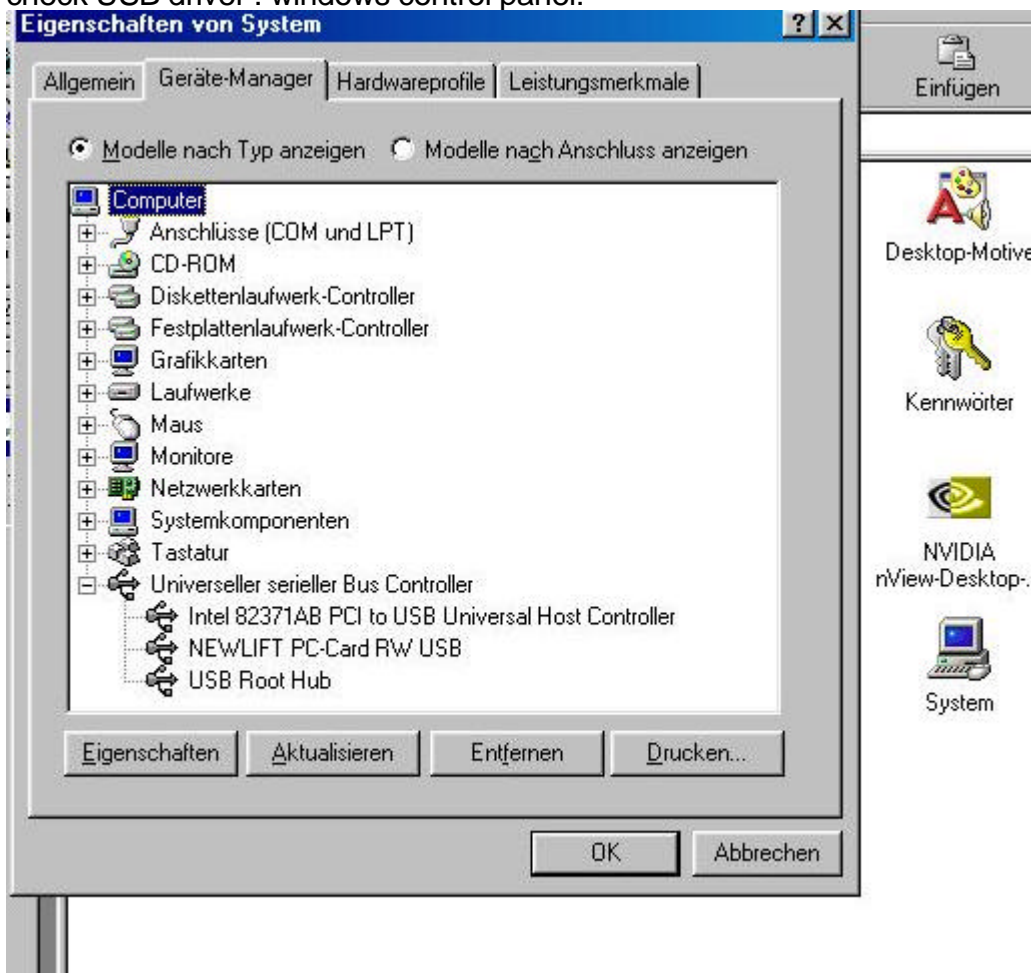


in the PC-Card "Drive" label (bottom right window corner) you should see -> **Drive : NEWLIFT**



8. insert 3.3V SRAM Card in PC-Cardreader-> **Mem Type : SRAM Size(kB):1024**

check USB driver : windows control panel:



Windows 2000

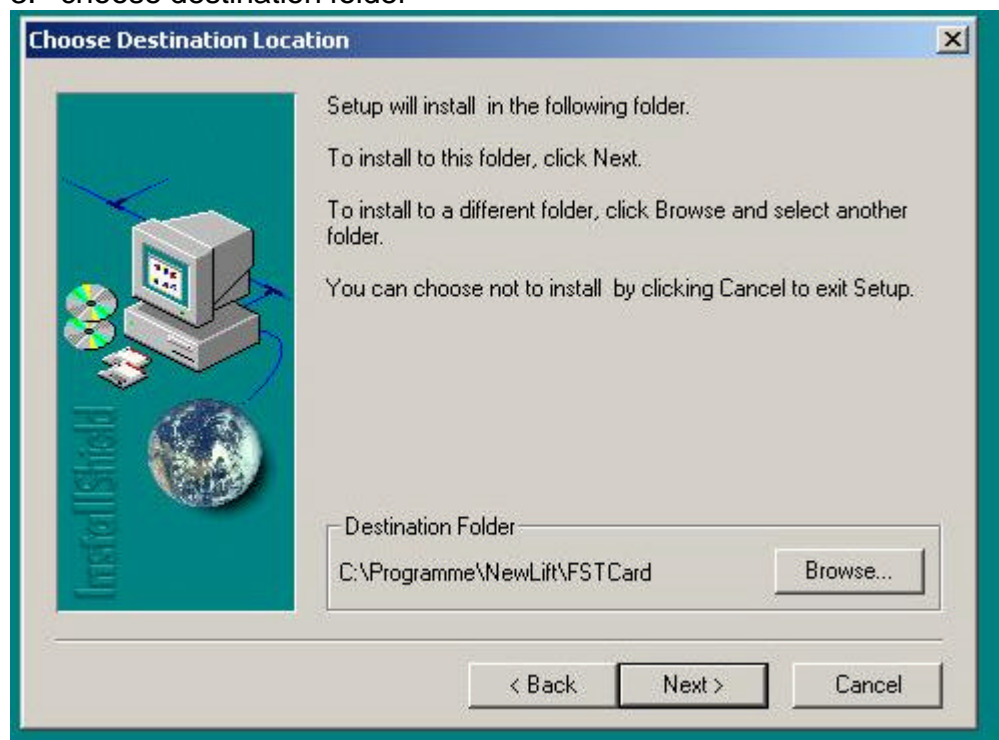
Windows XP

-Attention: first Software installation! last hardware connect!

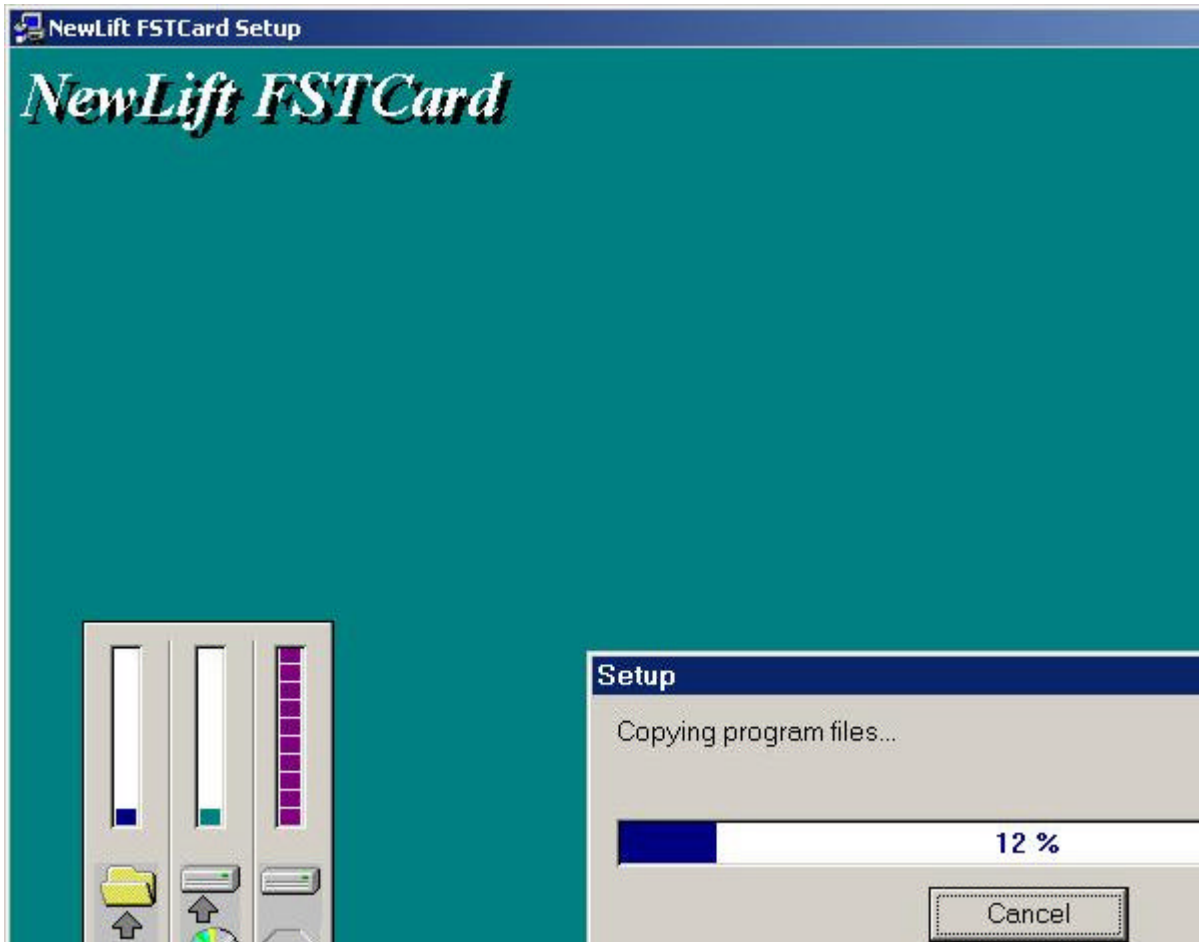
1. insert Installation-CD in CD-ROM drive
2. the PC-Card installation program should start automatically



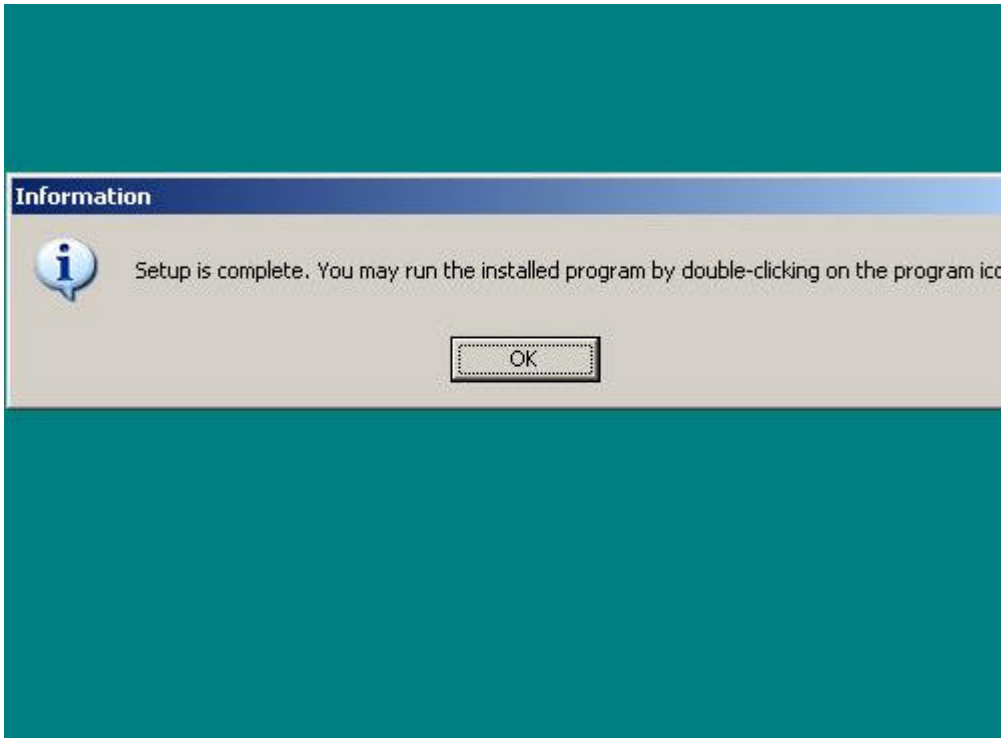
3. choose destination folder



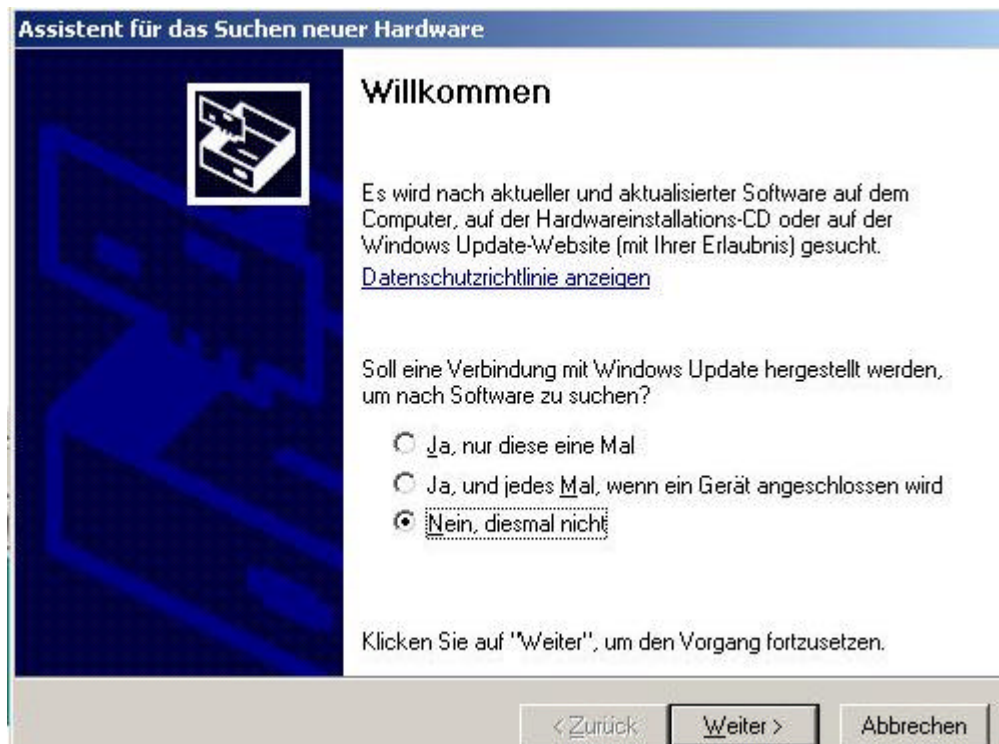
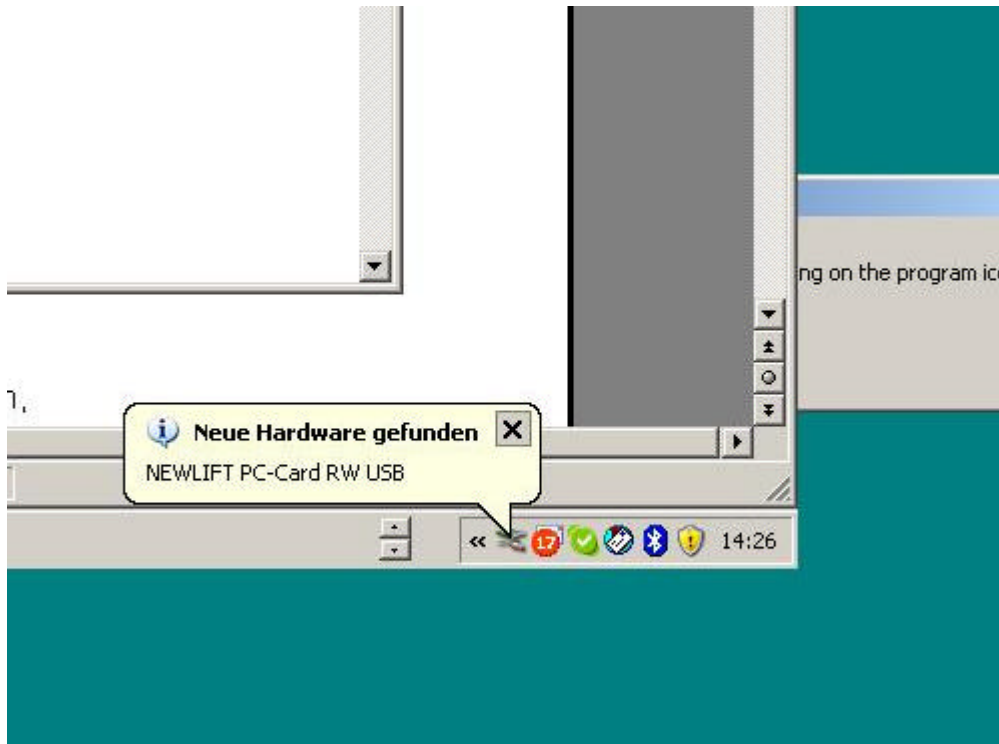
4. run Installation



6. connect PC Card Reader to a PC USB socket



7. Windows will detect the USB device and start the new "Hardware Assistant"



8. run driver installation, new "Hardware Assistent" (next)

Assistent für das Suchen neuer Hardware



Mit diesem Assistenten können Sie Software für die folgende Hardwarekomponente installieren:

NEWLIFT PC-Card RW/ USB



Falls die Hardwarekomponente mit einer CD oder Diskette geliefert wurde, legen Sie diese jetzt ein.

Wie möchten Sie vorgehen?

- ☒ Software automatisch installieren (empfohlen)
- ☐ Software von einer Liste oder bestimmten Quelle installieren (für fortgeschrittene Benutzer)

Klicken Sie auf "Weiter", um den Vorgang fortzusetzen.

< Zurück

Weiter >

Abbrechen

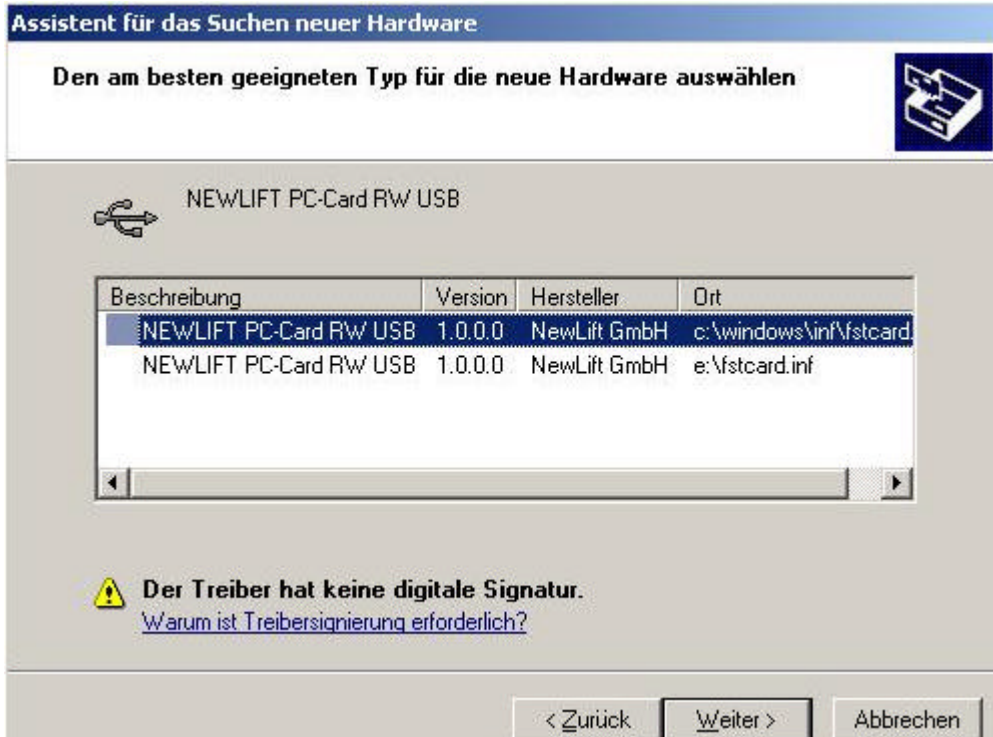
Assistent für das Suchen neuer Hardware

Es wird gesucht...

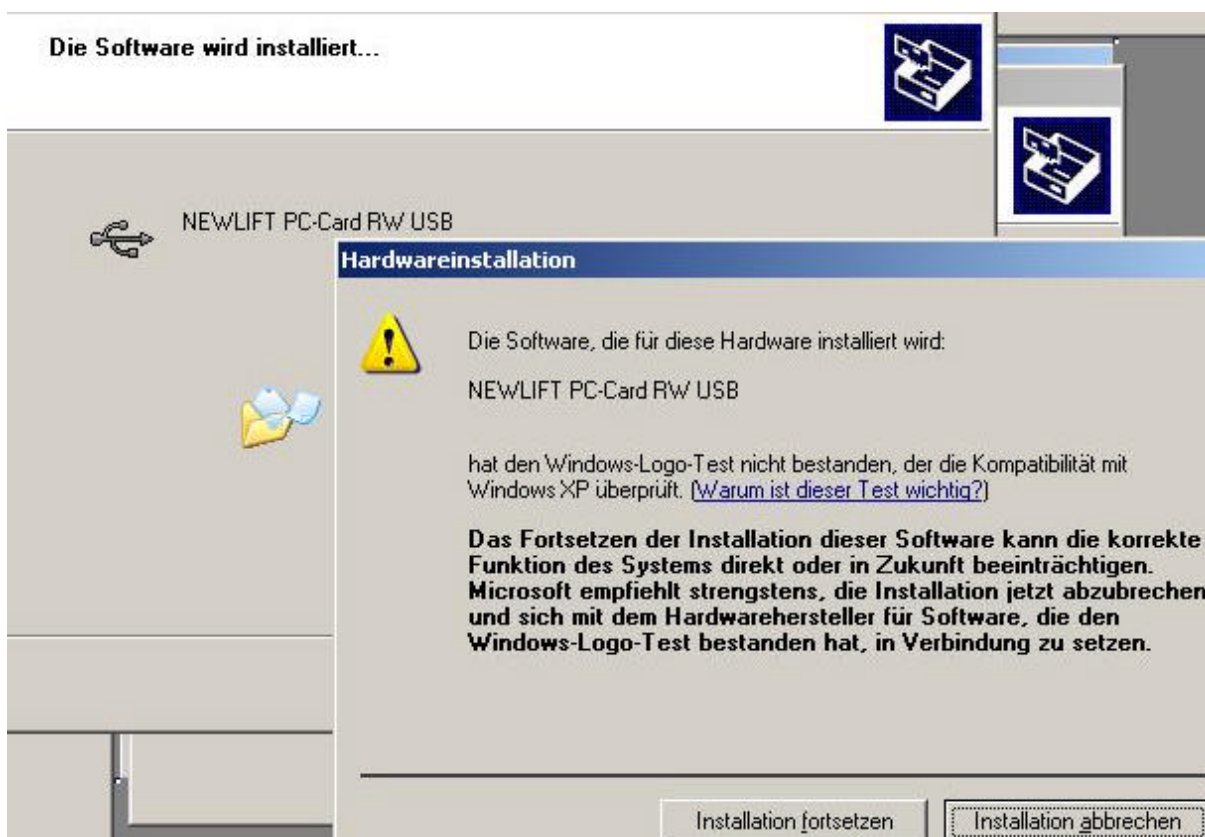


NEWLIFT PC-Card RW/ USB



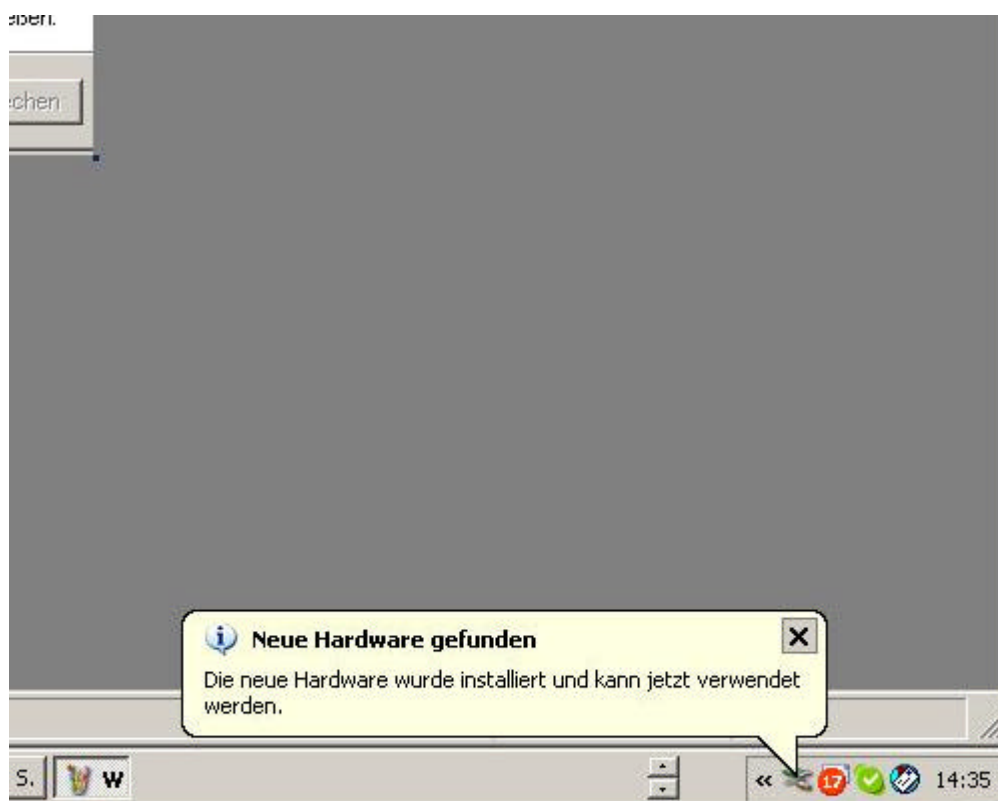


run driver installation

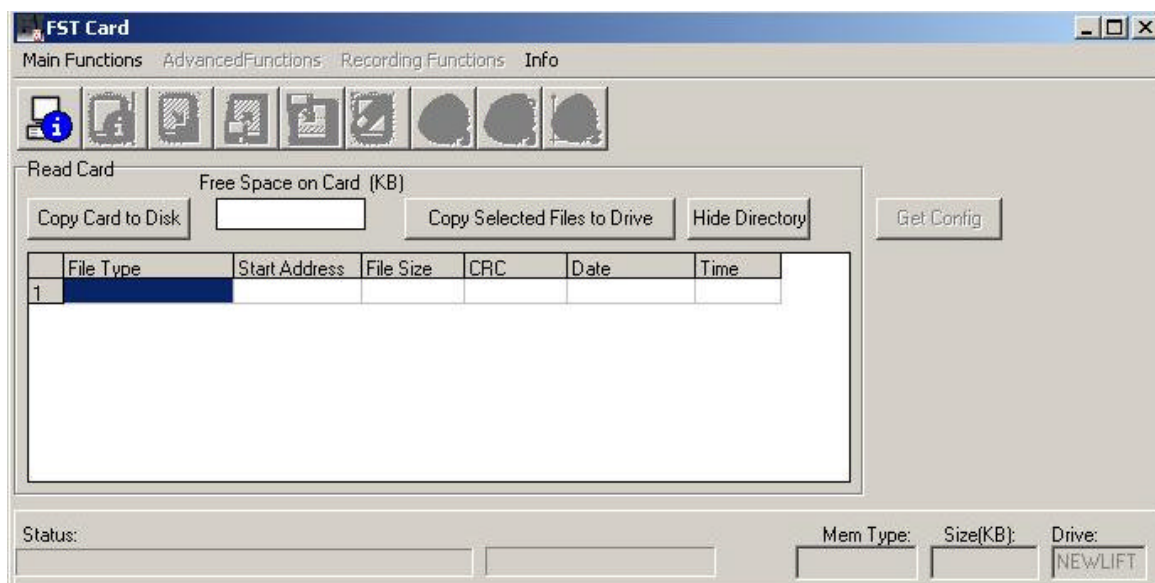


run driver installation

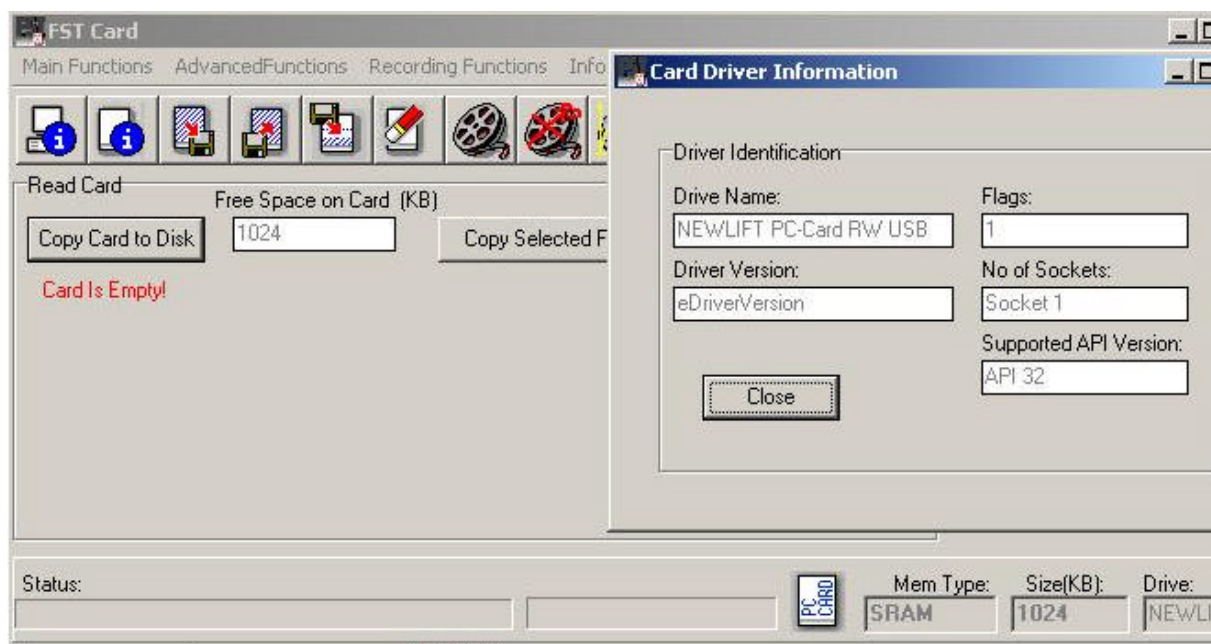
run driver installation



9. run PC Card software
10. check USB driver : if the USB-drive has been successfully installed and connected in the PC-Card "Drive" label (bottom right window corner) you should see "NEWLIFT"



in the PC-Card "Drive" label (bottom right window corner) you should see **Drive: "NEWLIFT"**



11. insert 3.3V SRAM Card in PC-Cardreader-> **Mem Type : SRAM Size(kB):1024**

check USB driver : windows control panel:

