

CSW

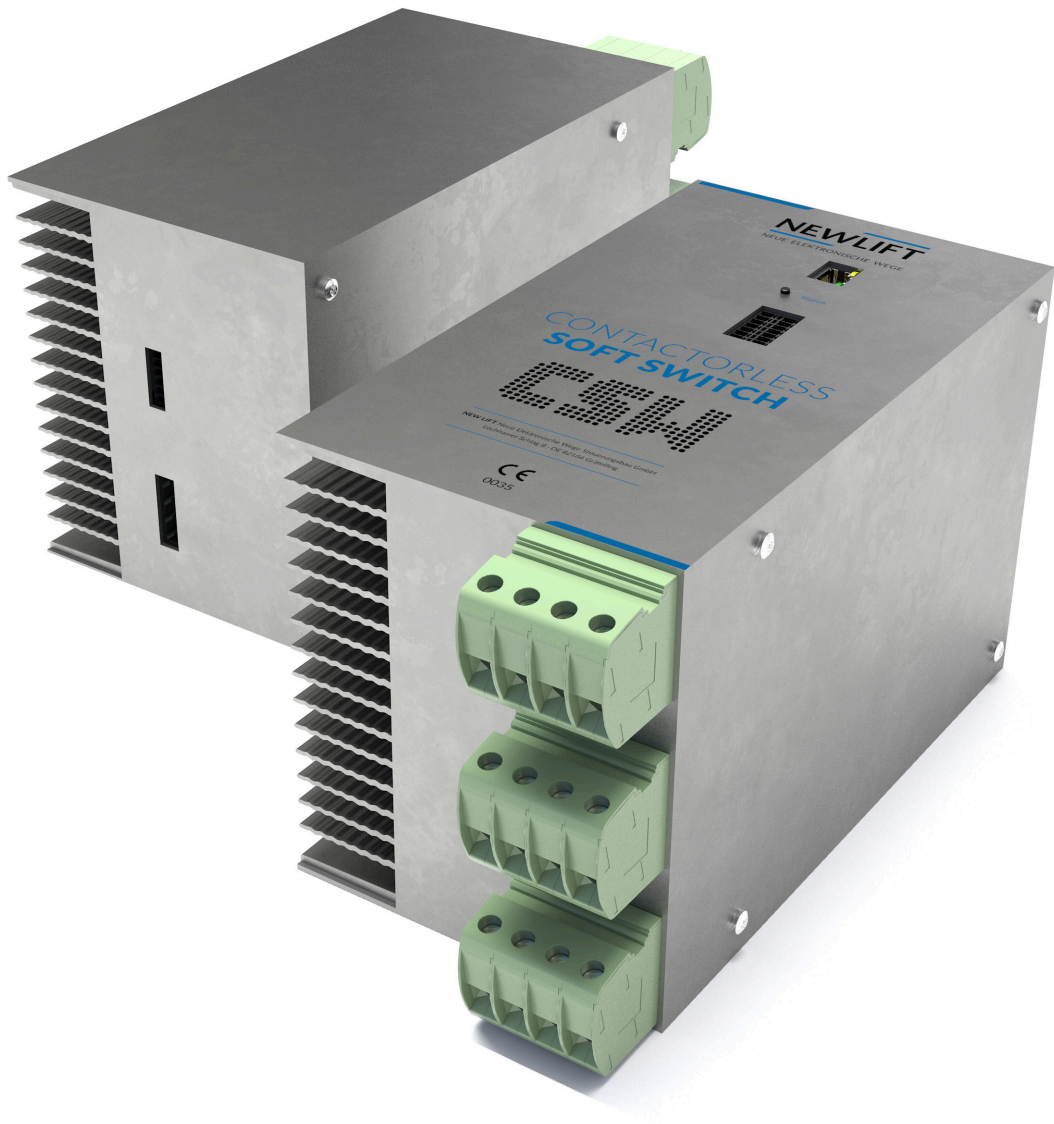
# CONTACTORLESS SOFTSWITCH

In cooperation with:



The first contactorless softstarter for hydraulic lifts





CSW

# CONTACTORLESS SOFTSWITCH

The first contactorless softstarter for hydraulic lifts

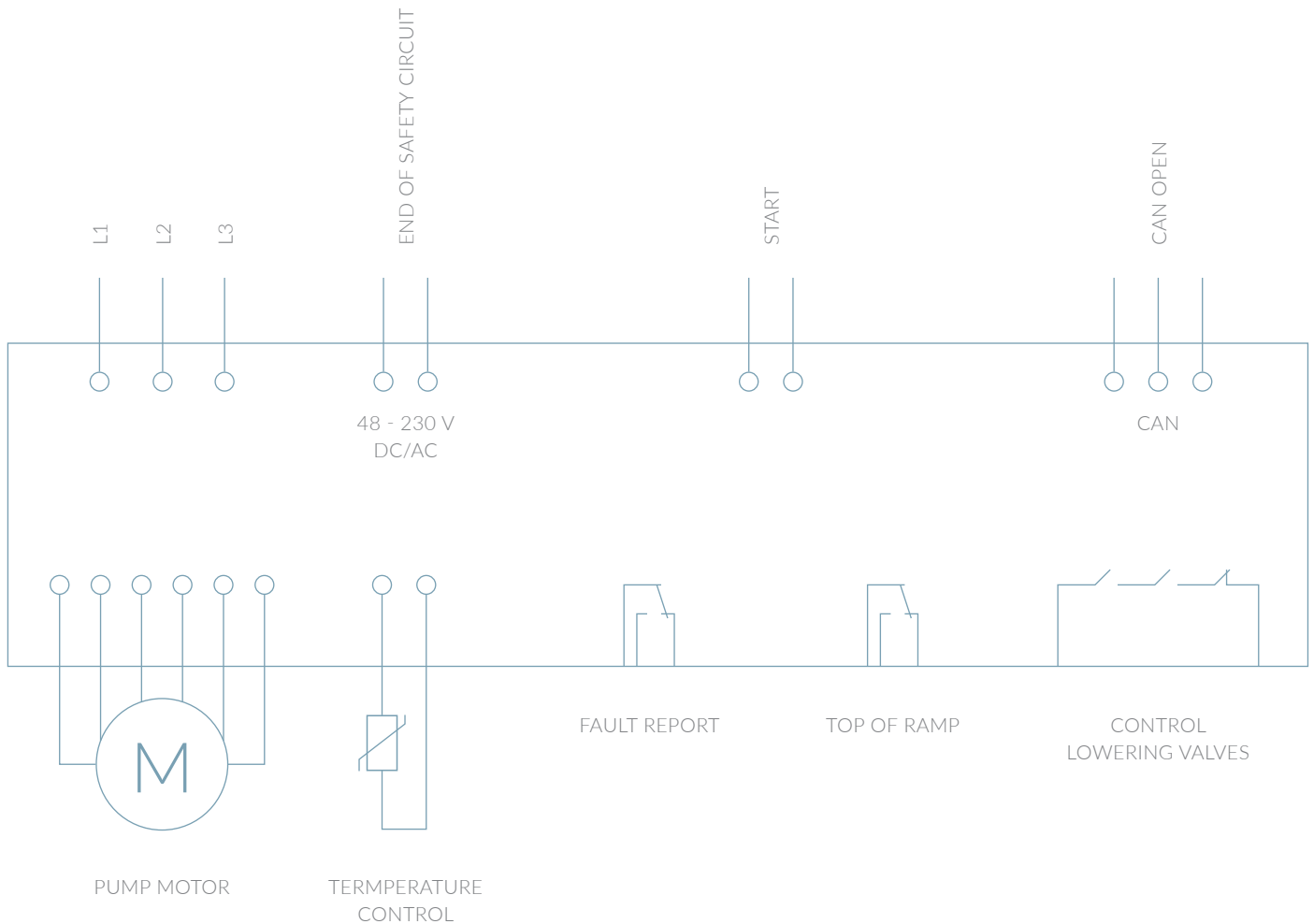
**W**ith the CSW, NEW LIFT, in collaboration with renowned system supplier RST ELEKTRONIK, has achieved a groundbreaking development: the first softstarter for hydraulic lifts that does not require any contactors at all.

This not only eliminates the motor contactors required by EN82-20/50 and the associated wear and noise problems. The CSW also replaces the control contactors for the lowering valves, which are required for regulated hydraulic control blocks, with an electronic circuit.

In addition, the CSW is already certified according to the upcoming DIN ISO 8100-1/2 standard and guarantees a hardware-based restart lock in the event of malfunctions in the power section.

The footprint of only 145 x 300 mm enables extremely compact control cabinet dimensions.

## WIRING DIAGRAM



## MAIN FEATURES

- Up to 16 kW, 50 A (additional sizes to follow)
- No motor contactors required  
(certified according to EN81-20/50 and DIN ISO 8100-1/2)
- No control contactors required for lowering valves  
(certified according to EN81-20/50 and DIN ISO 8100-1/2)
- Integrated phase failure monitoring
- Integrated temperature monitoring  
of the connected pump motor
- CAN Open interface  
for parameterisation, visualisation and troubleshooting

## TECHNICAL DATA

CSW dimensions (L x W x H)	300 x 145 x 170 mm
Weight	3,48 kg
Peak current	50 A
Standby power consumption	160 mA

📍 **NEW LIFT** Neue Elektronische Wege

Steuerungsbau GmbH  
Lochhamer Schlag 8  
DE 82166 Gräfelfing

☎ +49 (0) 89 898 66 0

📠 +49 (0) 89 898 66 300

✉ info@newlift.de

🌐 www.newlift.de

📍 **NEW LIFT**

Service Center GmbH  
Ruwerstraße 16  
DE 54427 Kell am See

☎ +49 (0) 6589 919 540

📠 +49 (0) 6589 919 540 300

✉ info@newlift-sc.de

🌐 www.newlift.de

